

SWISS HOLIDAY PARK



INTERIOR DESIGN BETWEEN
MOUNTAIN SILHOUETTE AND
HOTEL EVERYDAY LIFE

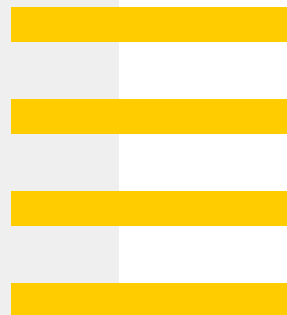
VERSATILITY IN INTERIOR FIT-OUT

A PROJECT THAT
CONNECTS DIVERSITY.

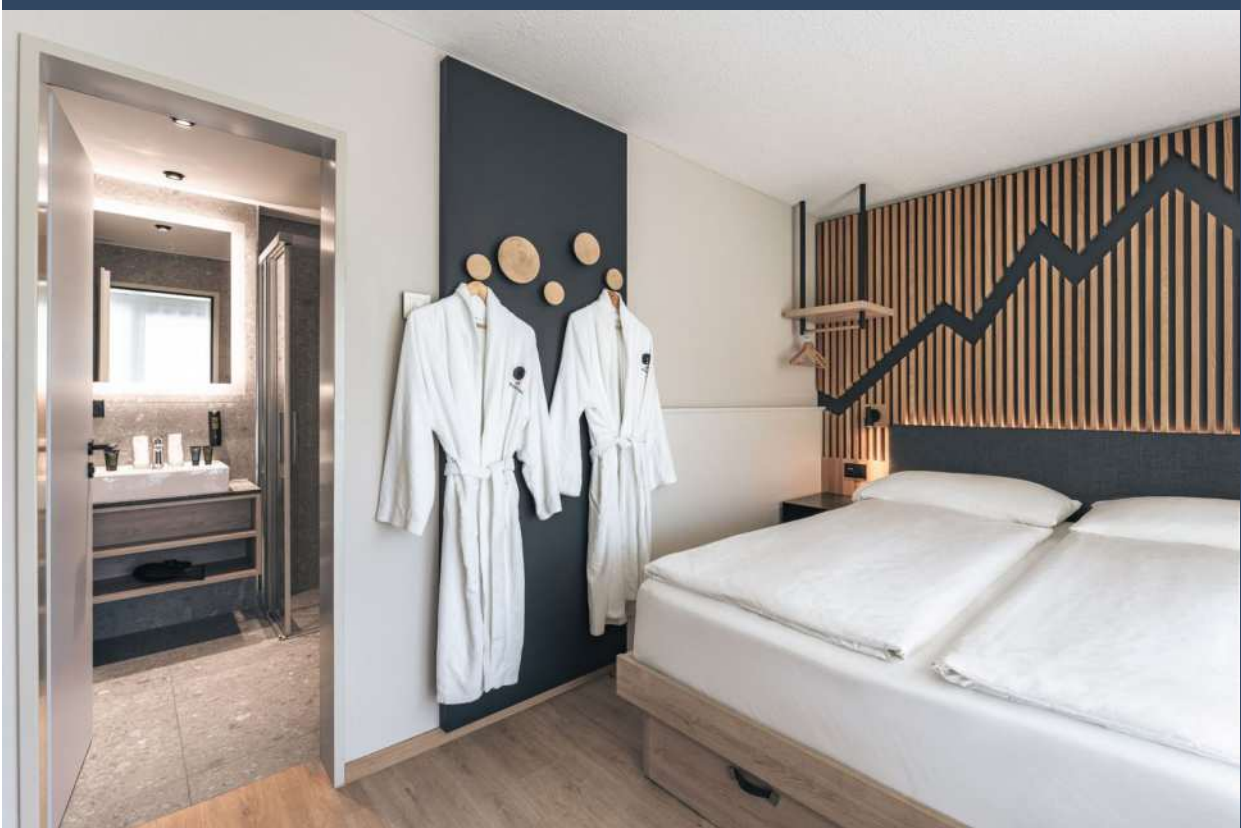
The Swiss Holiday Park is one of the largest **holiday resorts in Switzerland** and combines recreation, leisure, and hospitality on a spacious site. **Since 2022, we have been overseeing numerous modernizations** there in multiple construction phases. Crucial to success: The implementation is consistently carried out **during ongoing operations** and with all trades from a single source.

This approach ensures **stable processes, clear coordination**, and a modernization that was hardly noticeable for guests. At the same time, an overall picture emerges that appears seamless both architecturally and functionally, strengthening the resort's identity.

Rooms, spa, restaurant, meeting rooms. A project that demonstrates how **versatile interior construction from a single source** can be - and how well Swiss composure and precise project management complement each other.



WOW! ^{RK}





THE MOUNTAIN CALLS

SOLID WOOD, CLEAR SHAPES
AND A MOTIF THAT CONNECTS.

In the **first construction phase**, **32 guest rooms**, **two holiday apartments**, and **six long-term rooms** with integrated kitchens were completely renovated. The long-term rooms are designed like small apartments and offer guests additional comfort for longer stays.

The **central design element** connects the rooms directly to the alpine surroundings: **a specially developed mountain silhouette** that is integrated as a massive wooden element into the headboards.

The production was a **special technical requirement**. The silhouette was made from solid wood, precisely sawn, and installed in several steps. The contours needed to appear precise despite the organic shape, while remaining robust enough to withstand daily use and hotel operations.

The result gives the rooms **strong recognition** and creates a **warm, calm atmosphere** that harmoniously blends with the other materials.

FACTS:

32 guest rooms
2 holiday apartments
6 long-term rooms

HIGHLIGHT:

**Specially developed
mountain silhouette
made of solid wood**

A NEW LOOK AT THE *PANORAMA*

MODERN MEETS HOSPITALITY
IN A NEW ATMOSPHERE.

The restaurant was also modernized **while in operation**. Through temporary barriers, closely coordinated time windows, and open communication with employees, guest operations remained consistently ensured.

The new installations combine **warm materials** with clear lines, giving the space a **modern, coherent character** that matches the overall style of the resort.



YEAH! ^{RC}



SPACES *THAT* *CAN DO MORE*

FLEXIBLE,
FUNCTIONAL,
VERSATILE.

The **spa area** received **new wall coverings** that create a noticeably calmer and more upscale ambiance. The implementation took place during operation, requiring clear processes, consideration, and flexible construction times.

The new surfaces support a **relaxed atmosphere** and incorporate the natural materials from the rooms.

The **arcade** received a **visual update** that harmoniously fits into the leisure offerings.

In the **meeting rooms**, bespoke solutions such as **room dividers, kitchen modules, and coat racks** were created. The elements are flexibly usable and tailored to different event requirements. As a result, the rooms appear **functional, tidy, and high-quality**.

PRECISION BEHIND THE SCENES

HOW TO BUILD A HOTEL OPERATION

■ WORKING DURING OPERATION

The areas remained in use during the modernization. The teams worked with clear time frames, targeted cordoning, and consideration for everyone on-site.

■ PLANNING AND LOGISTICS

Customs clearance and longer delivery routes were key factors. Detailed planning ensured the smooth sequence of production, delivery, and assembly.

■ DESIGN TRANSLATION

The concept was translated by us into materials, constructions, and details that appear durable, functional, and aesthetic.

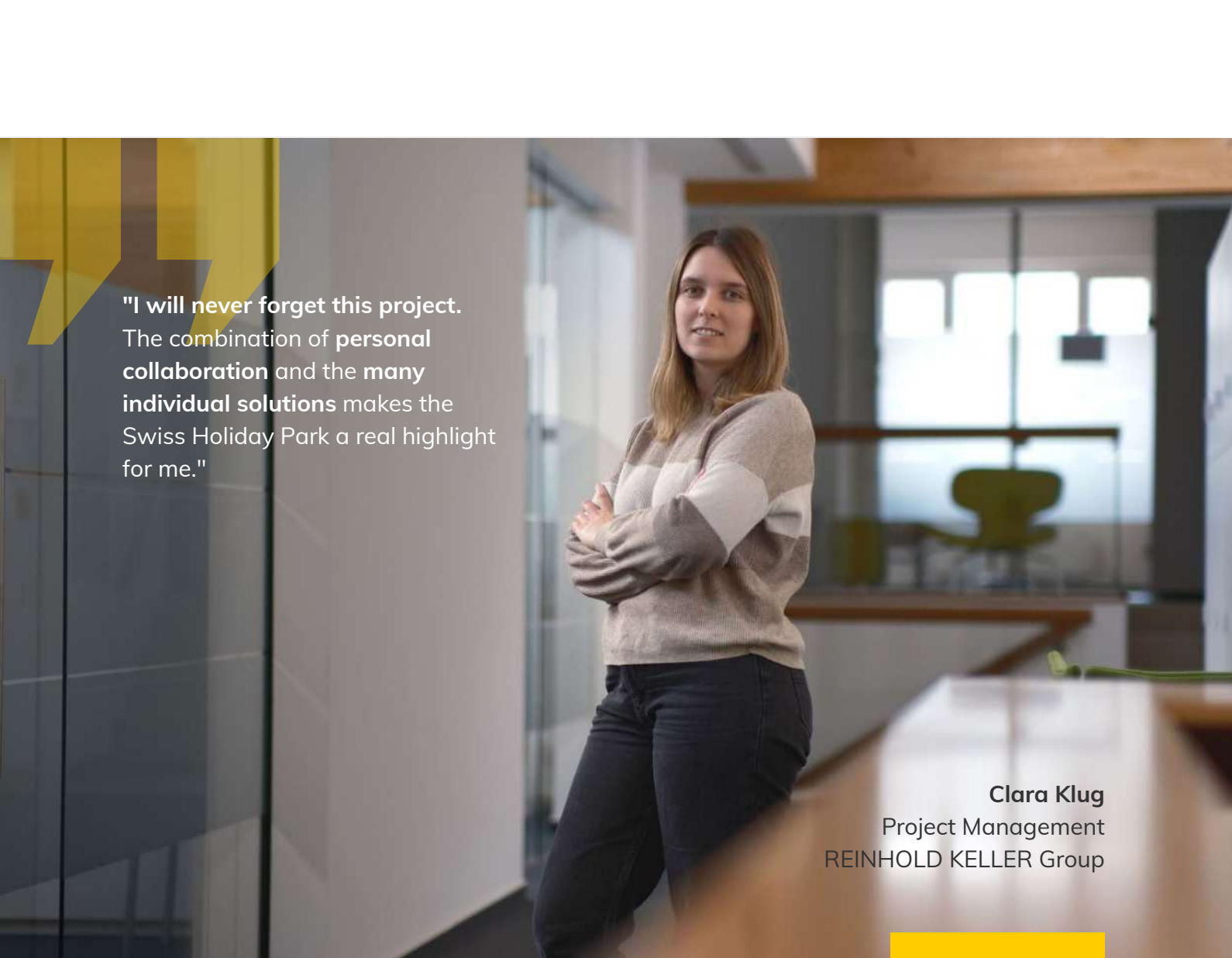
■ INDIVIDUAL SOLUTIONS

The mountain silhouette, spa wall coverings, and custom-made elements in the meeting rooms are among the most defining details of the project.

TRUST THAT TRANSFORMS SPACES.

The **collaboration** was characterized by open, calm, and solution-oriented communication. This attitude significantly contributed to the smooth realization of the individual construction phases over several years.

A reliable partnership developed with **architect Michele D'Ambrosio**, marked by clear guidelines, trust, and an efficient joint process in the public areas.



"I will never forget this project. The combination of **personal collaboration** and the **many individual solutions** makes the Swiss Holiday Park a real highlight for me."

Clara Klug
Project Management
REINHOLD KELLER Group

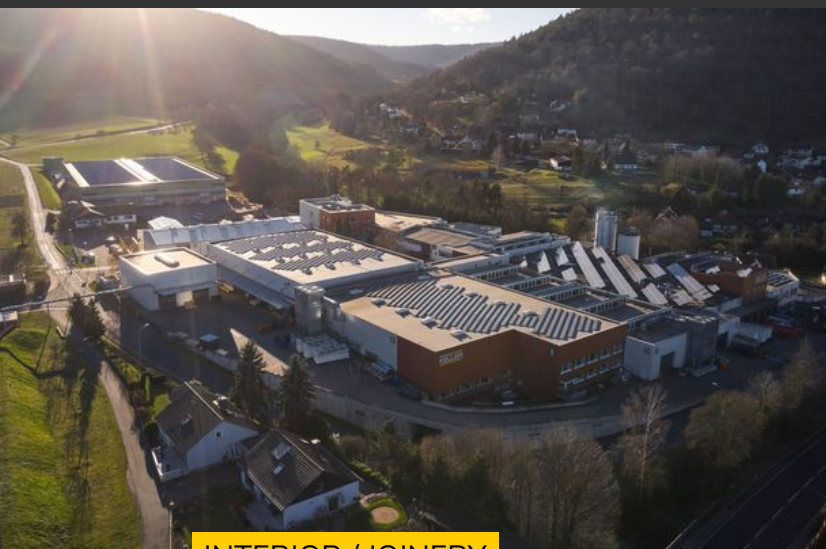
The modernized areas now come together to create a **coherent overall picture** that benefits all guests.

This effect is particularly evident in the visual comparison. **Rooms** with natural materials and clean lines, a more open **restaurant**, and a **spa** with warm surfaces demonstrate how a resort can be modernized step by step without disrupting ongoing operations. This is precisely where **the greatest added value** lies: **implementation from a single source**. The areas were planned, developed, and realized in a coordinated manner.

This results in a showcase of how **modernization and hotel operations can work hand in hand**.



HEY!
HEY!
HEY!
HEY!
HEY!



INTERIOR / JOINERY

GENERAL CONTRACTING


FROM VISION TO WOW!

WHAT WE OFFER YOU

Depending on how far you have progressed with your construction and ideas, we have the appropriate solution for your requirements. Whether it's a new build or refurbishment, you choose the moment when you want to bring us on board as a partner.

LET'S CONNECT

 contact@reinhold-keller.com

 www.reinhold-keller.com

REINHOLD
KELLER
PROFESSIONAL INTERIOR